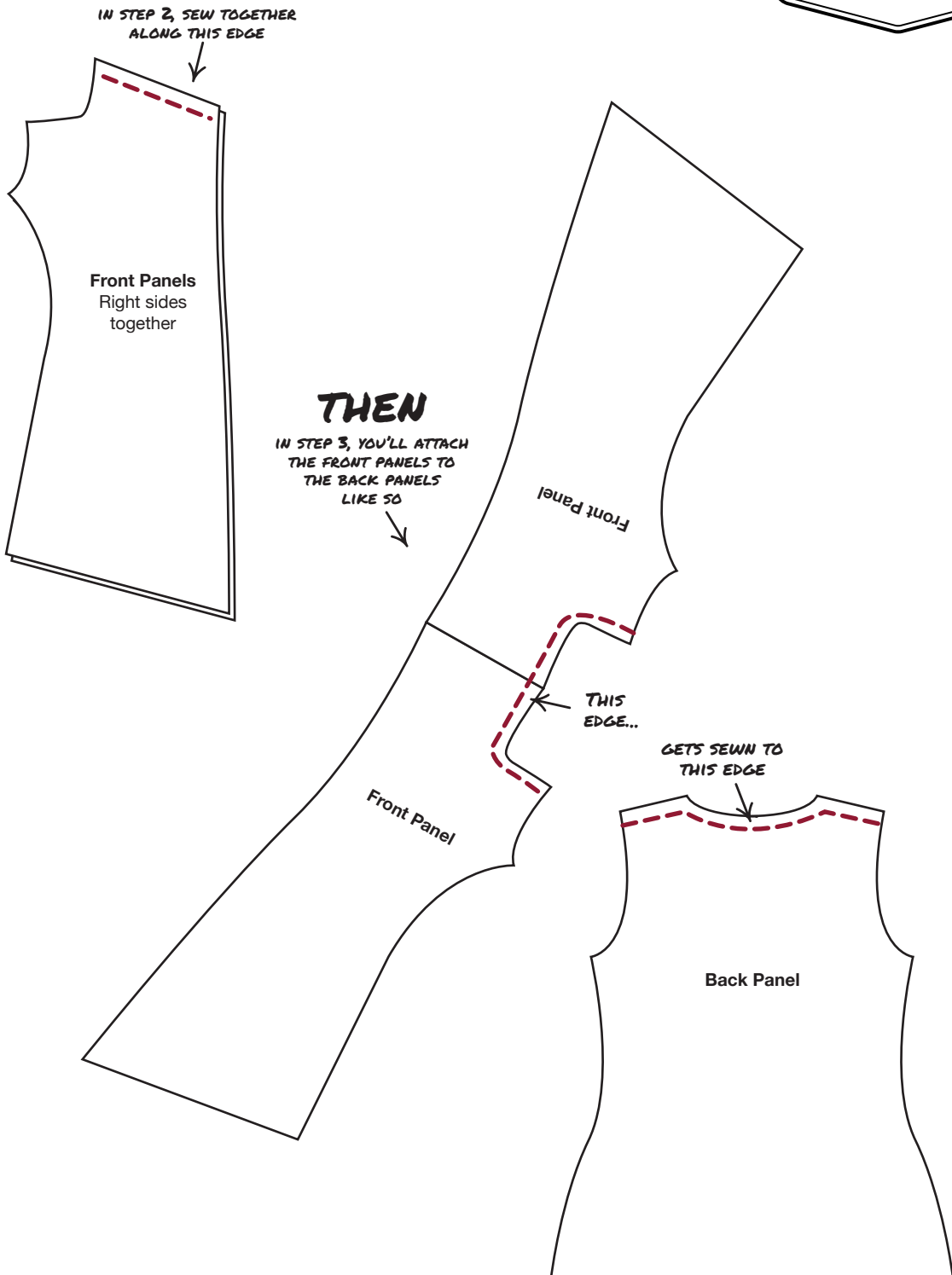


Diagram for how the Front Panels match up to the Back Panel



Layout guide to help you match pieces together






The pages will print in rows, from left to right.

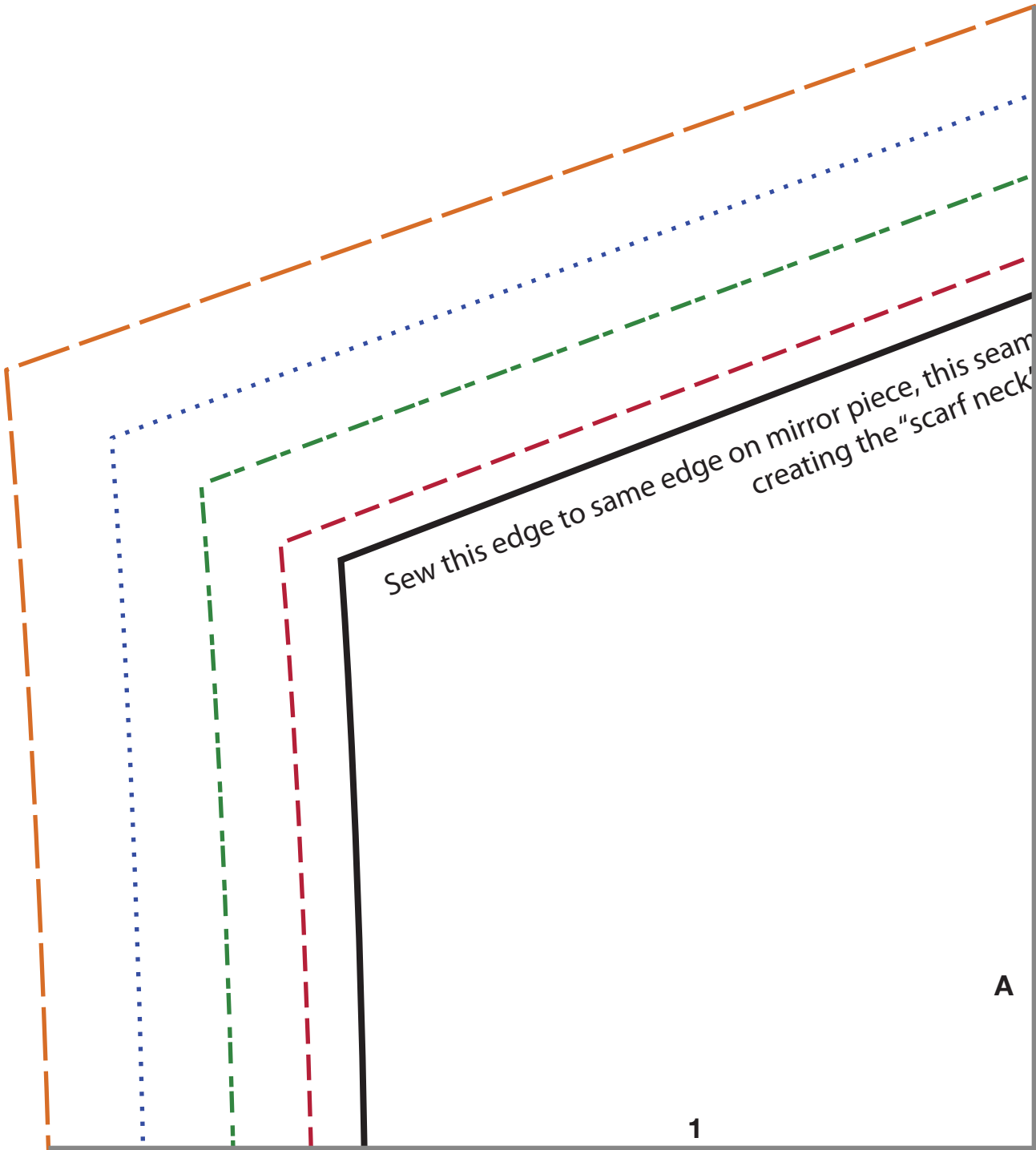
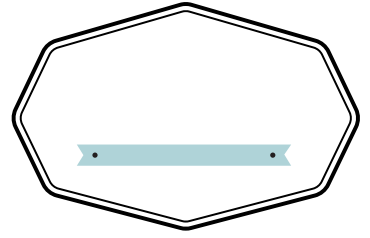


Sizing Chart

Use your body measurements to find your correct size below (in inches)

	Sm	Md	Lg	XL	XXL
Bust	32-34	36-38	40-42	44-46	48-50
Cross Back	14.5	15	15.5	16.5	17.5
Upper Arm	10	11	12	13	15.5
Waist	25-26	28-30	30-34	36-38	40-42

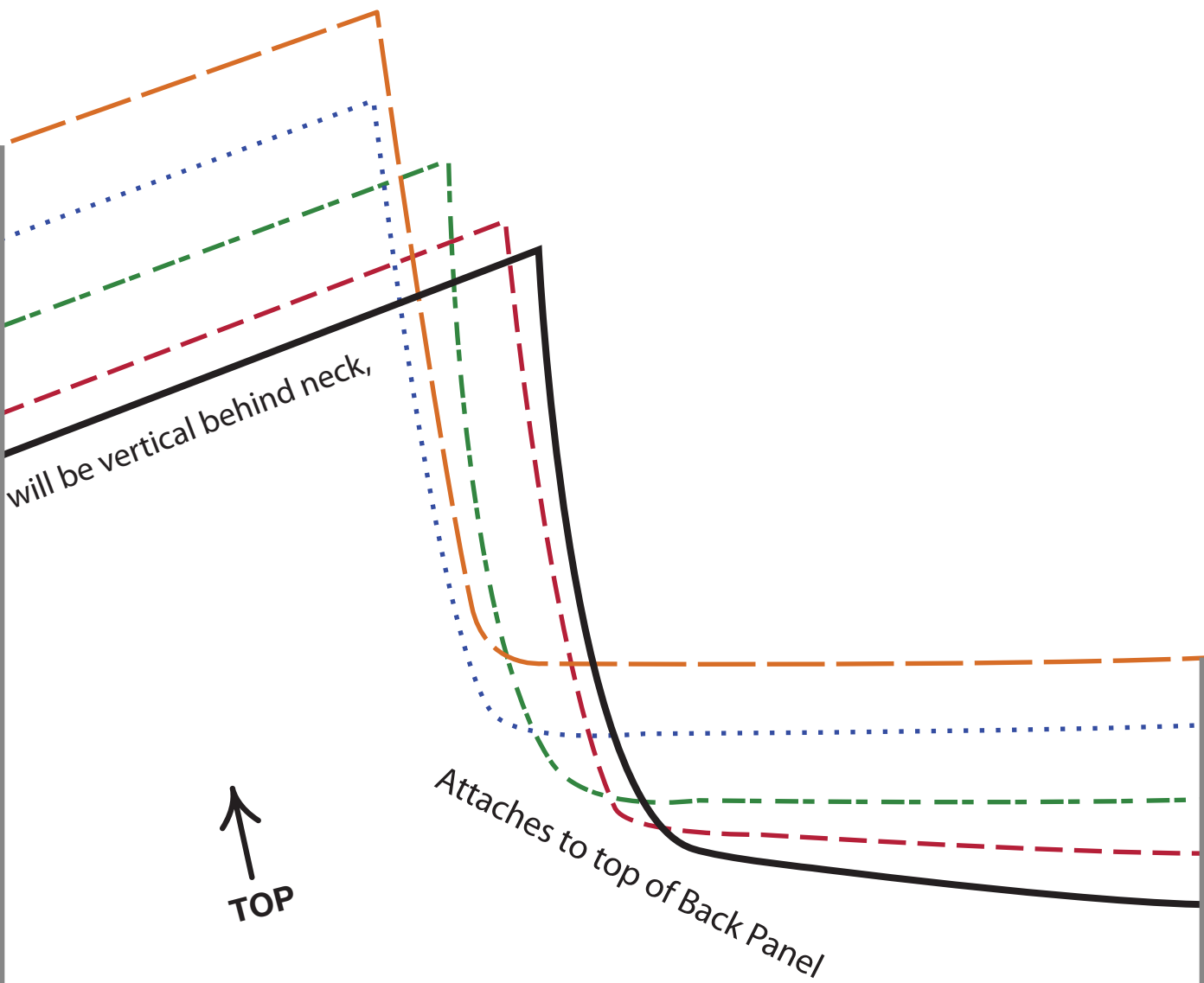
-  **Small**
-  **Medium**
-  **Large**
-  **XL**
-  **XXL**

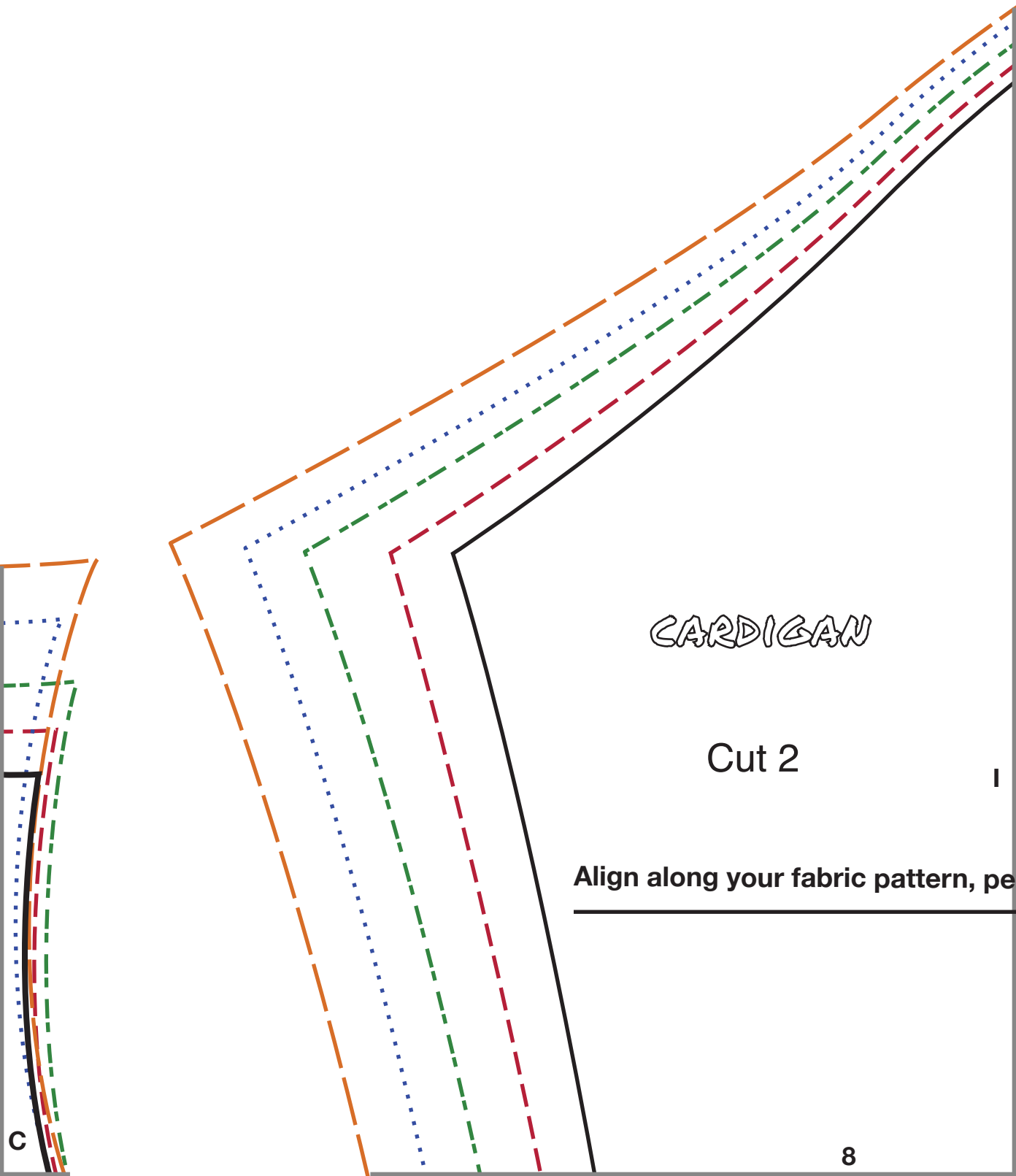


Sew this edge to same edge on mirror piece, this seam creating the "scarf necker"

A

1

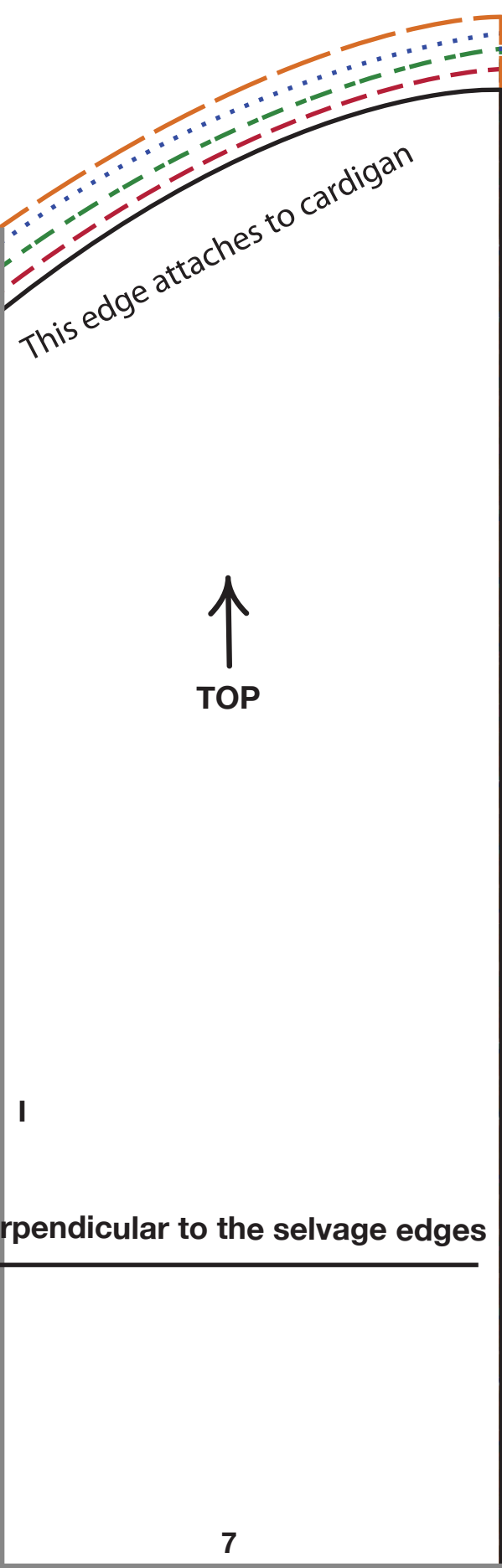




CARDIGAN

Cut 2

Align along your fabric pattern, pe



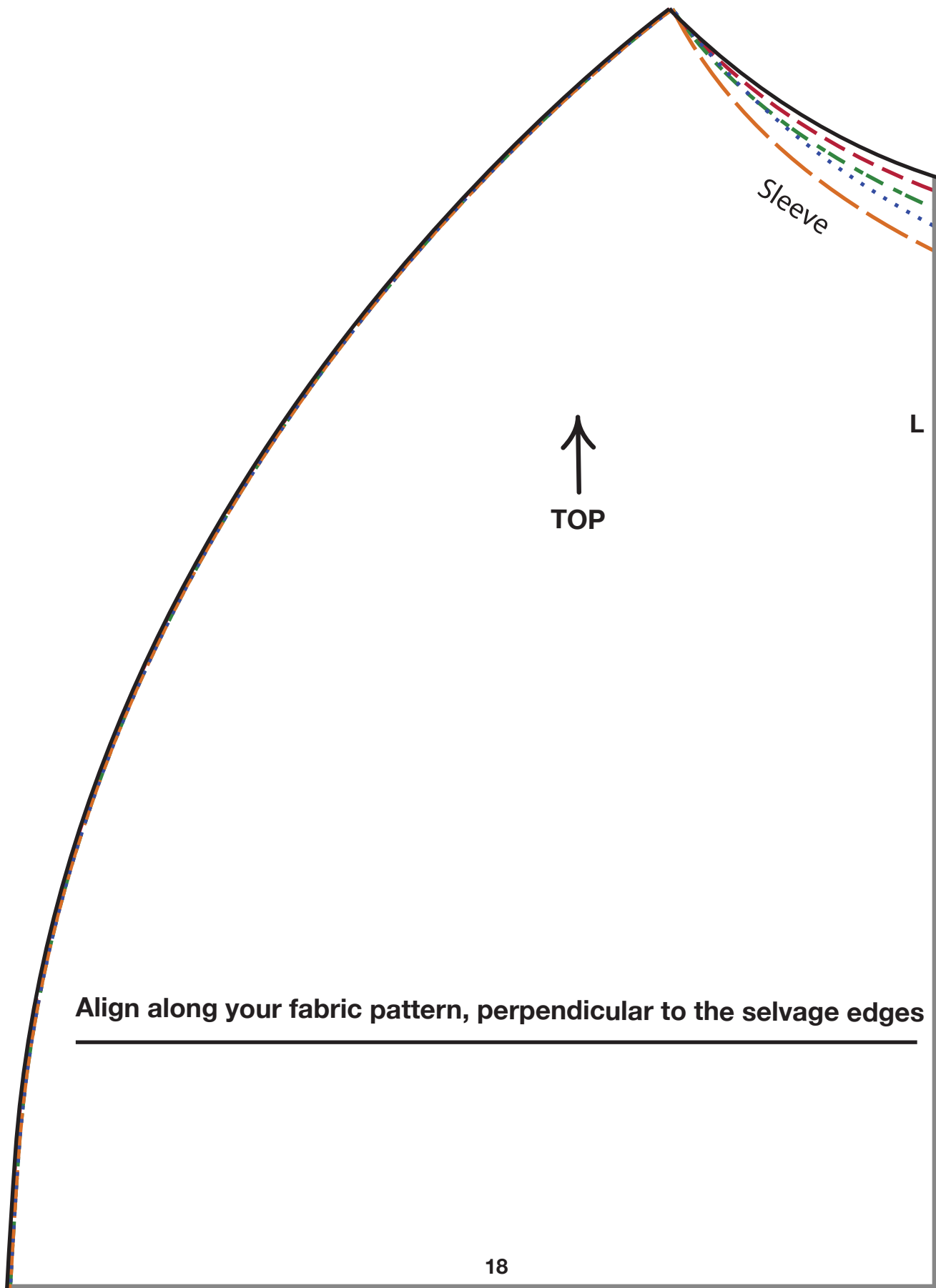
This edge attaches to cardigan

↑
TOP

1

perpendicular to the selvage edges

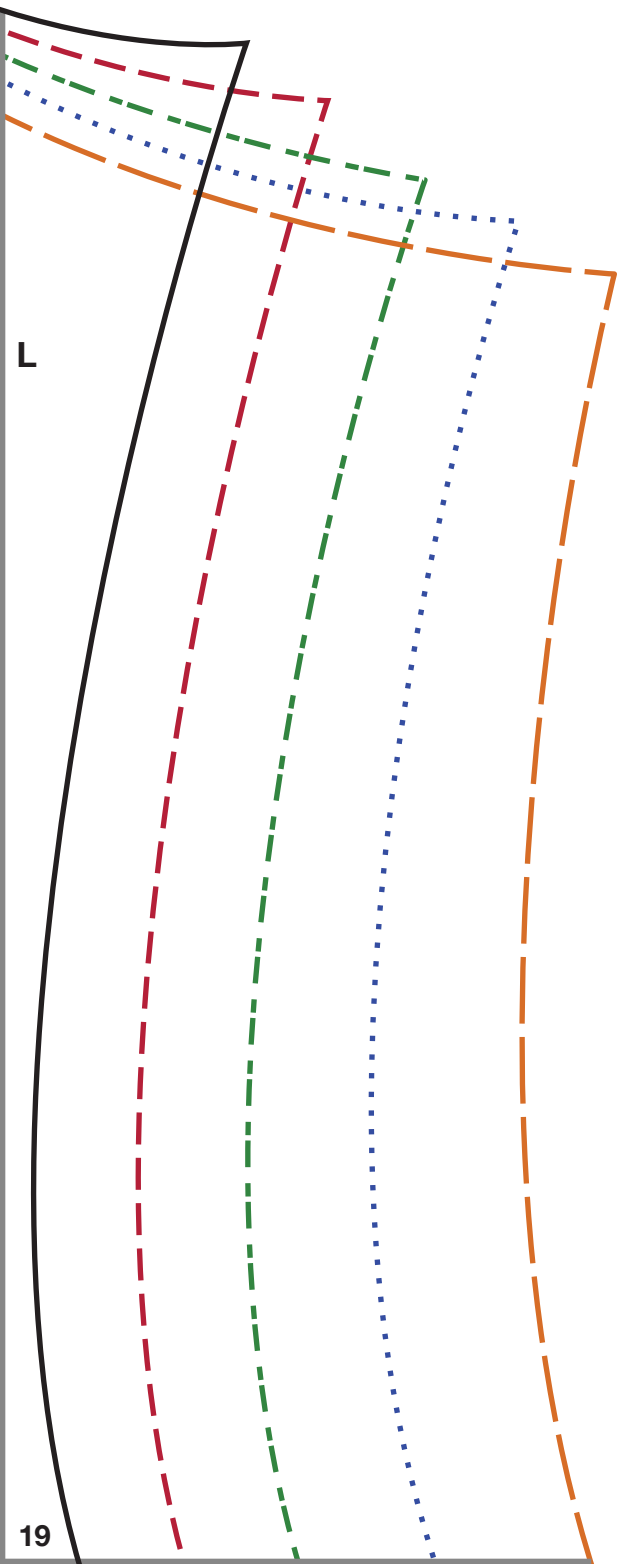
7

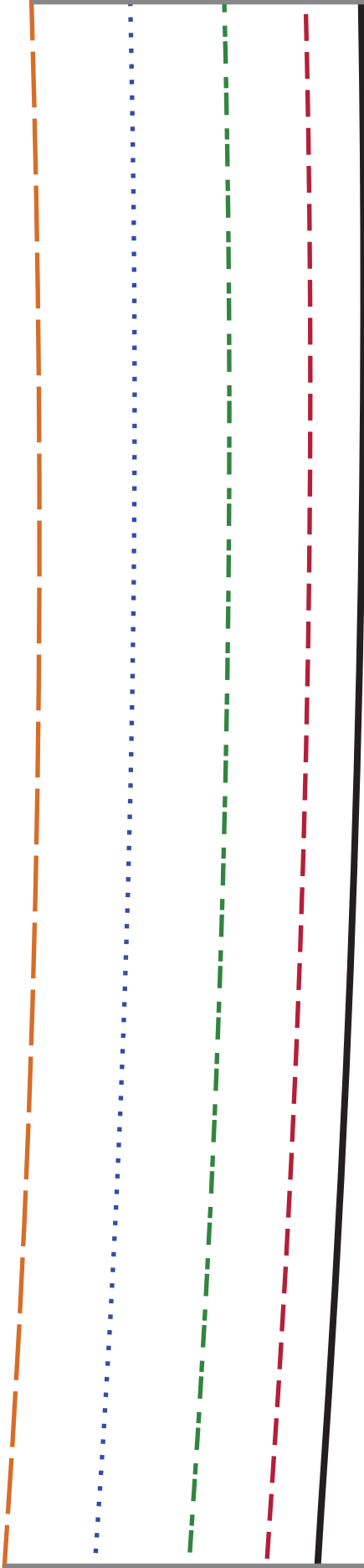


Sleeve

↑
TOP

Align along your fabric pattern, perpendicular to the selvage edges





1

B

3

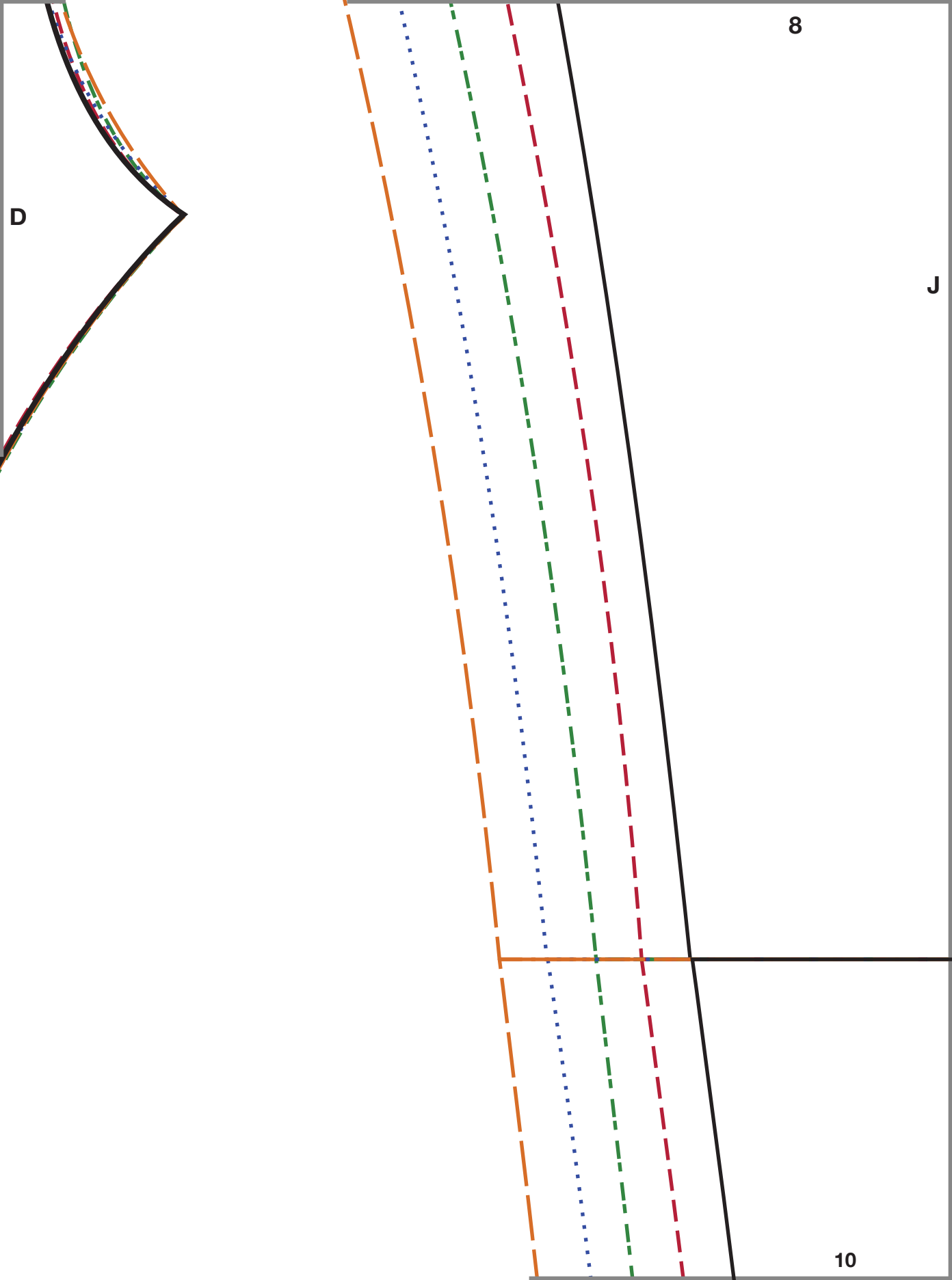
CARDIGAN

Front Panel

Cut 2

B





7

J

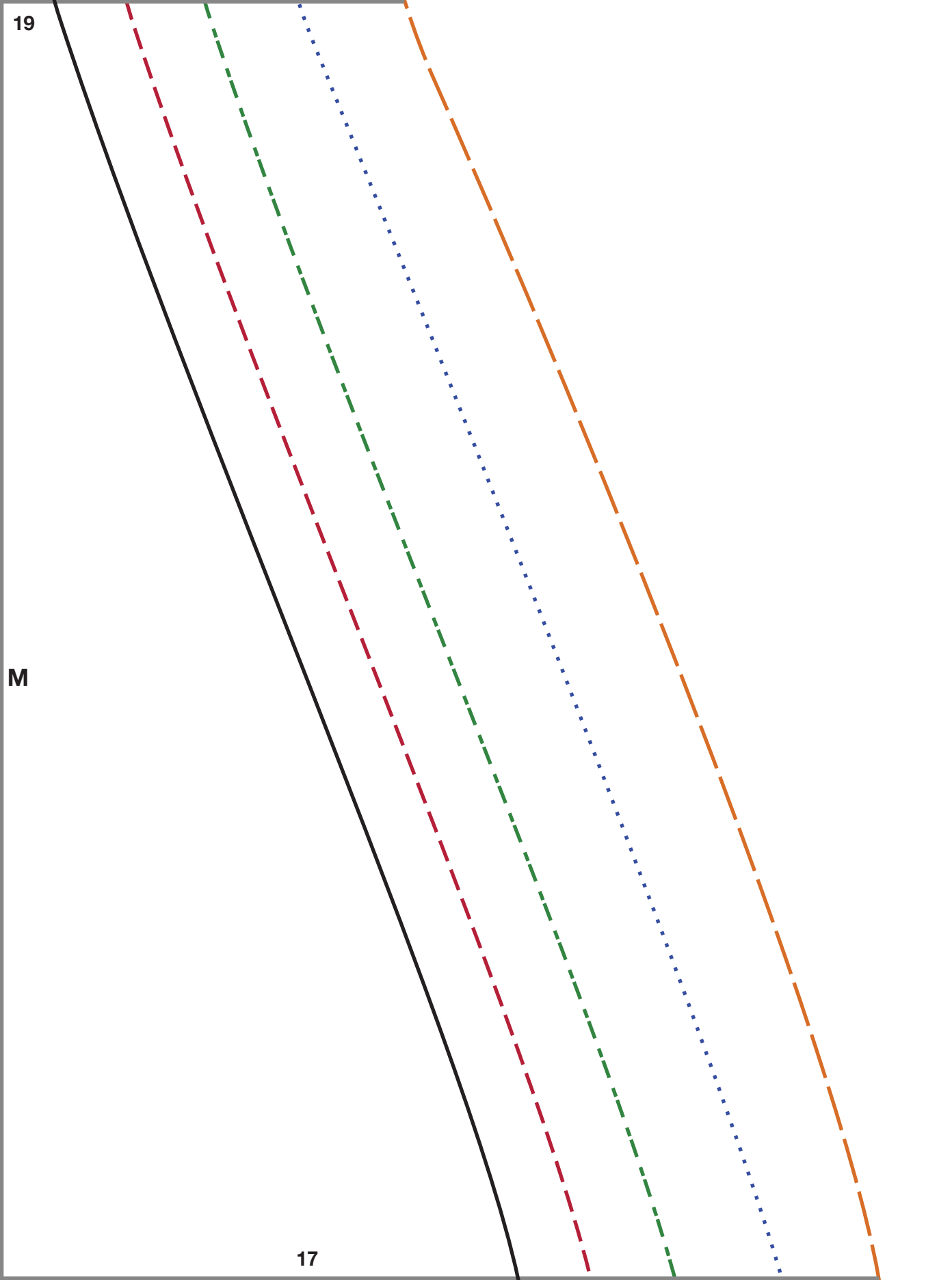
FOLD

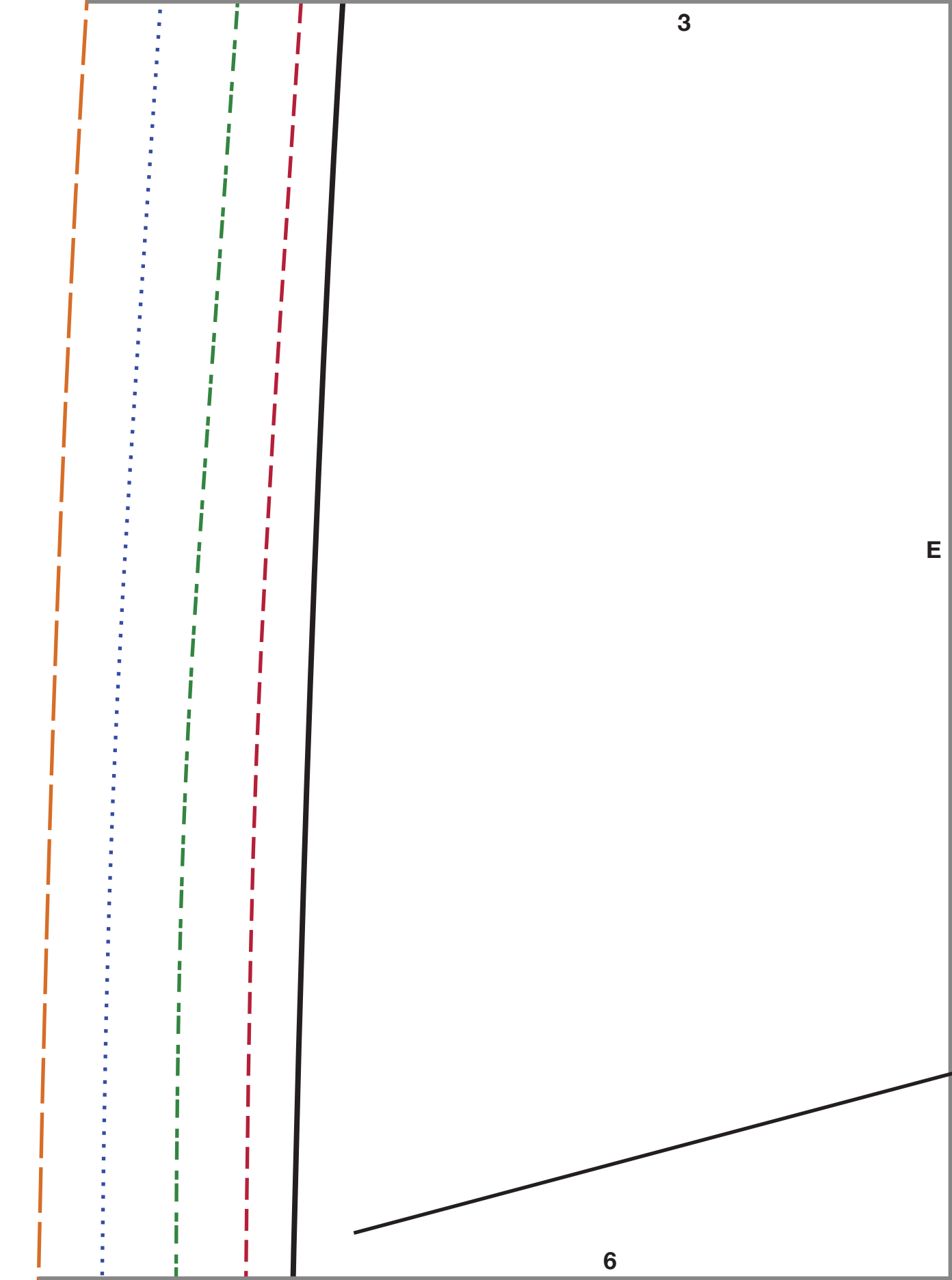
9

CARDIGAN

Cut 2

M

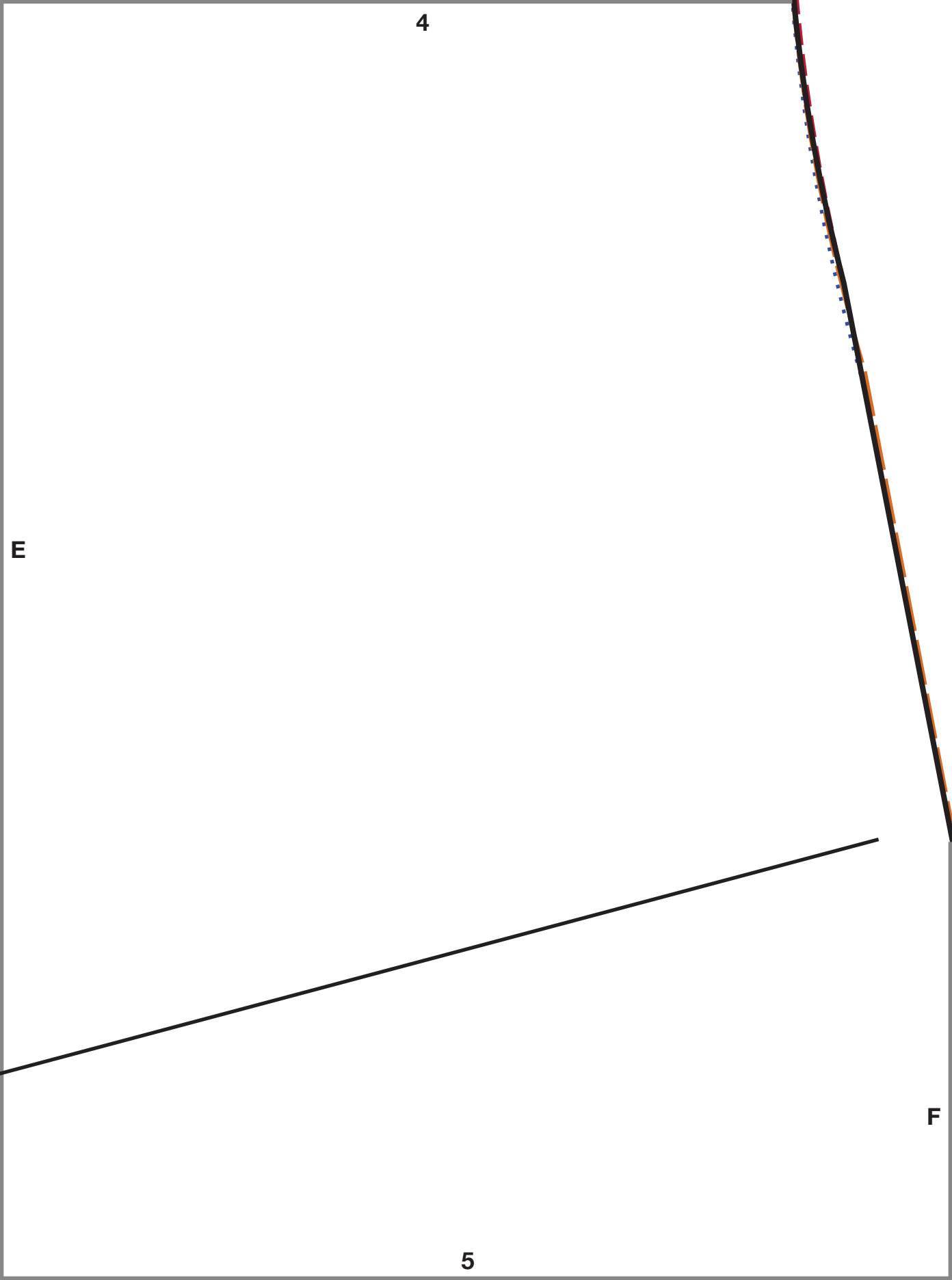


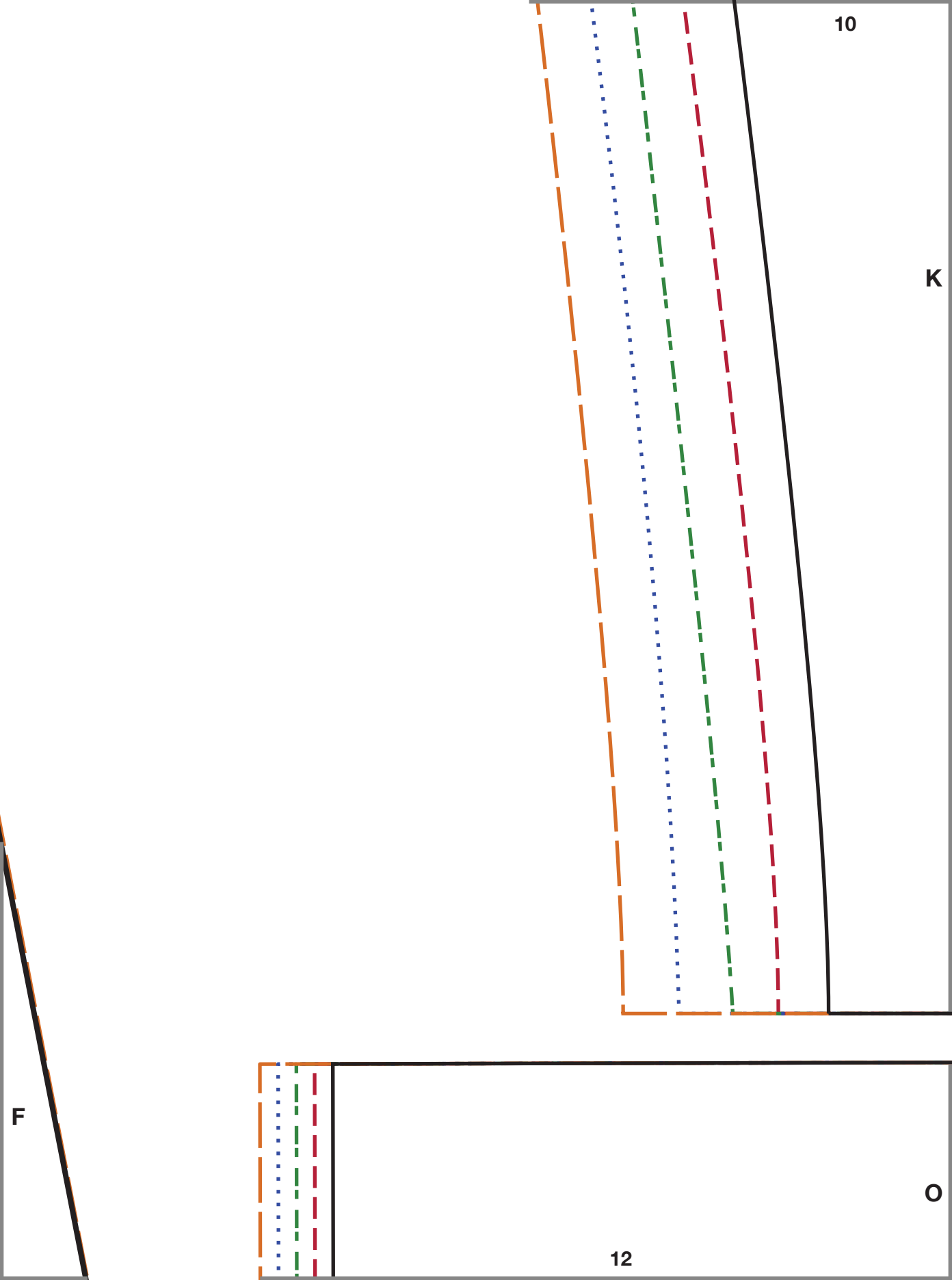


3

E

6





10

K

F

O

12

9

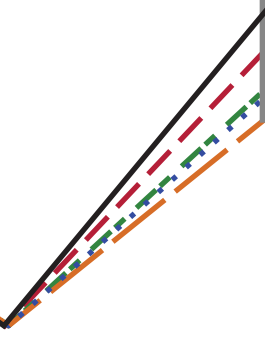
K

Cut here for long sleeves

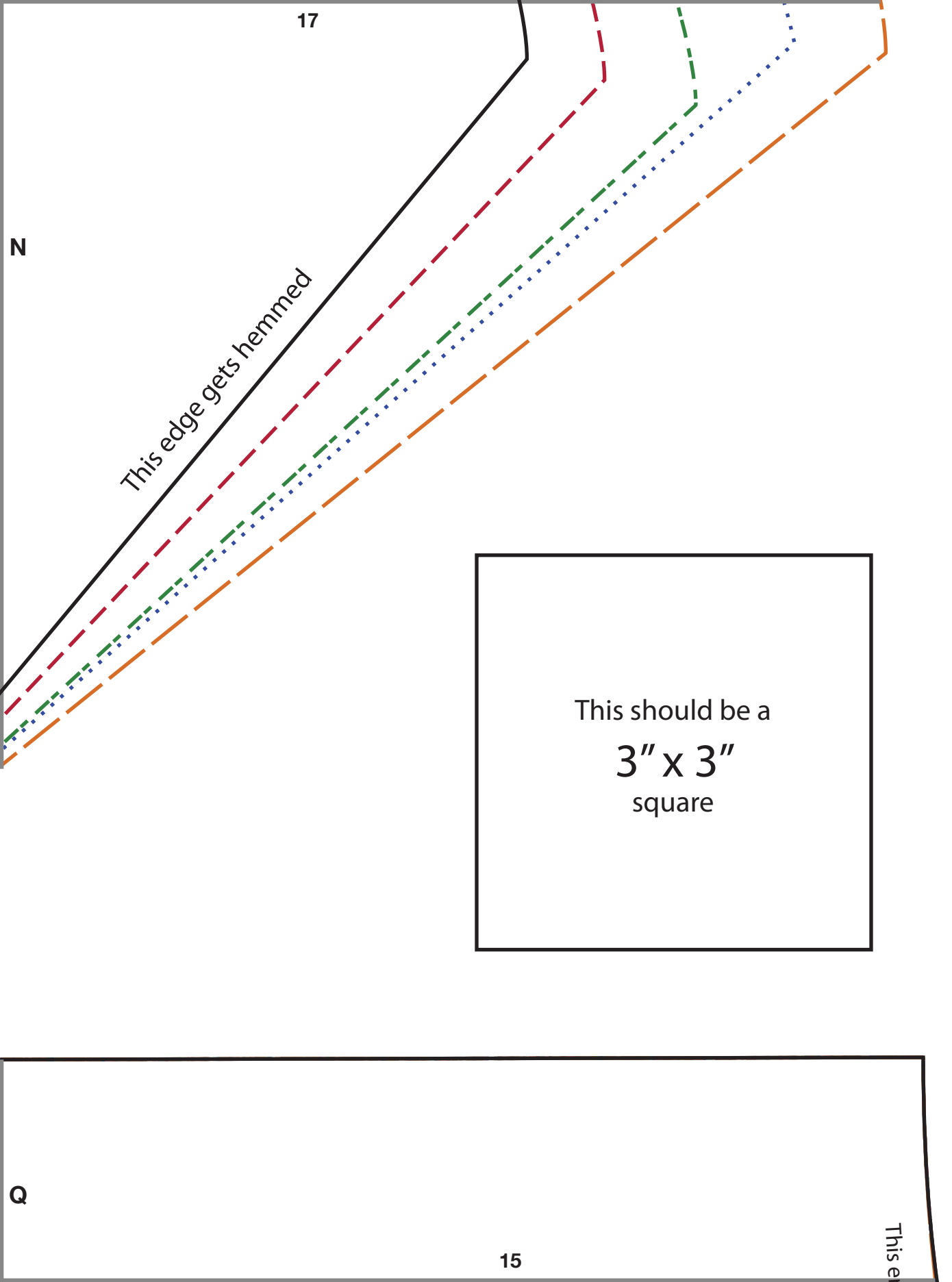
O

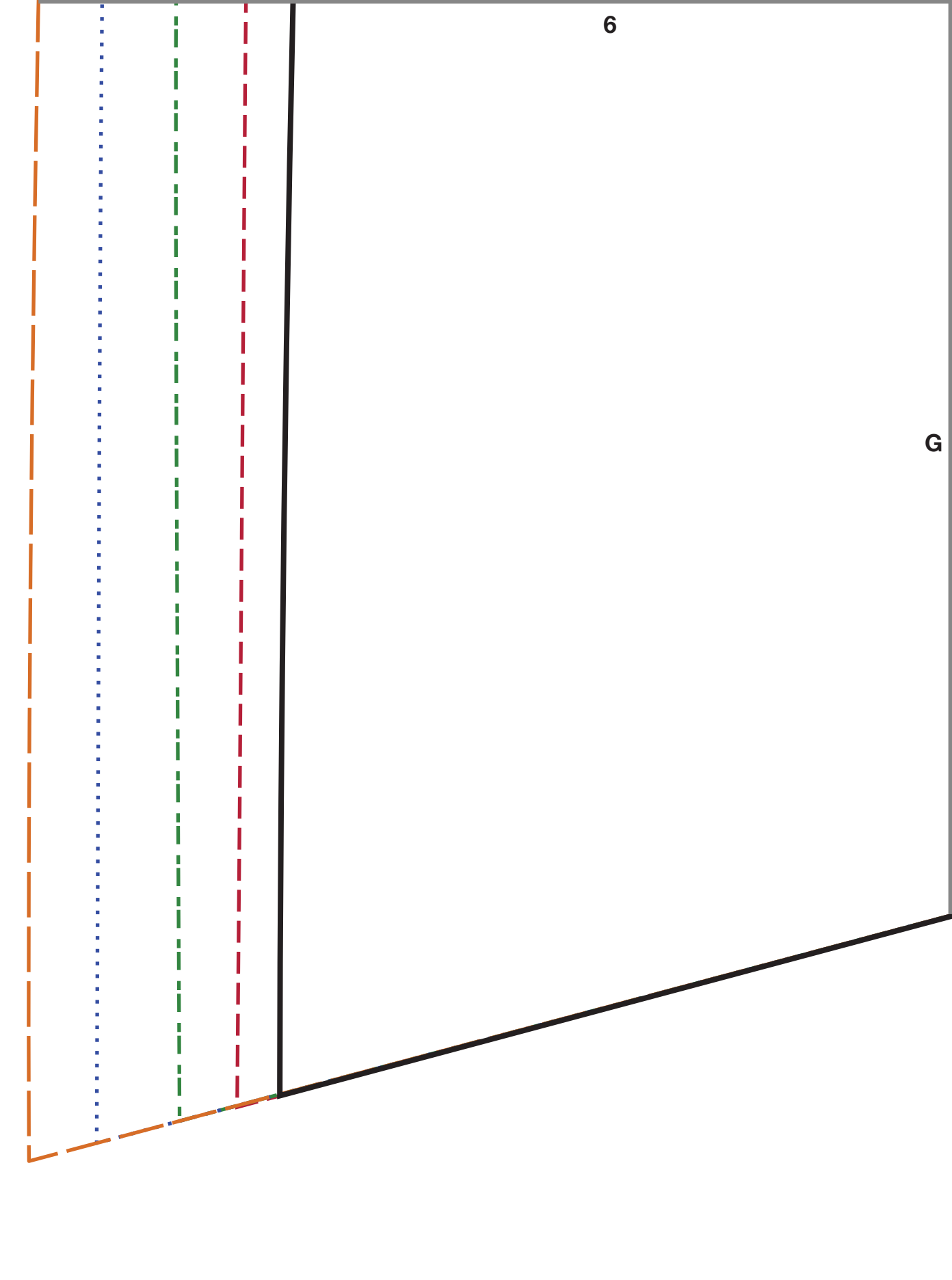
P

This edge gets hemmed



FOLD



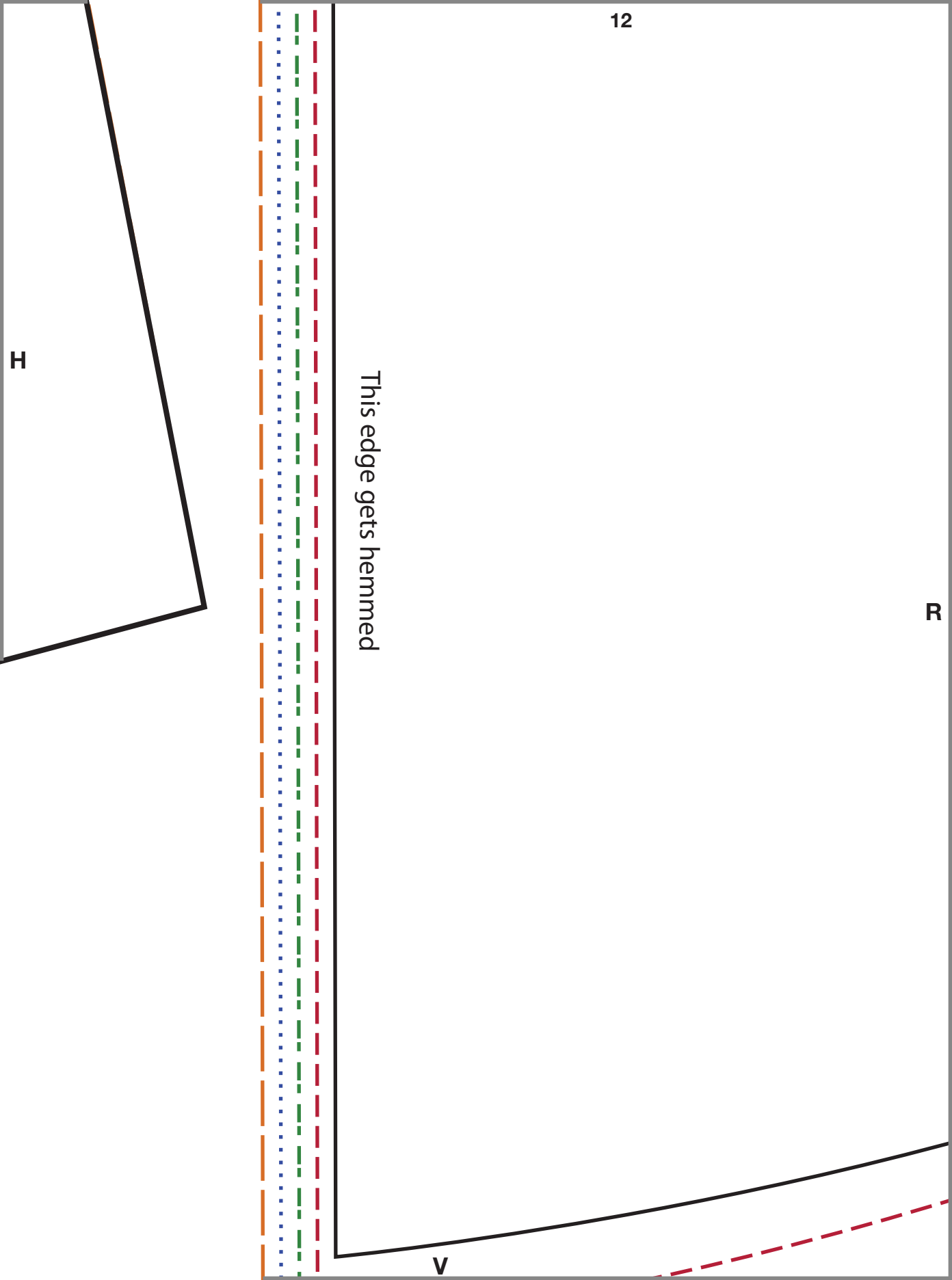


5

H

G

This edge gets hemmed



12

H

This edge gets hemmed

R

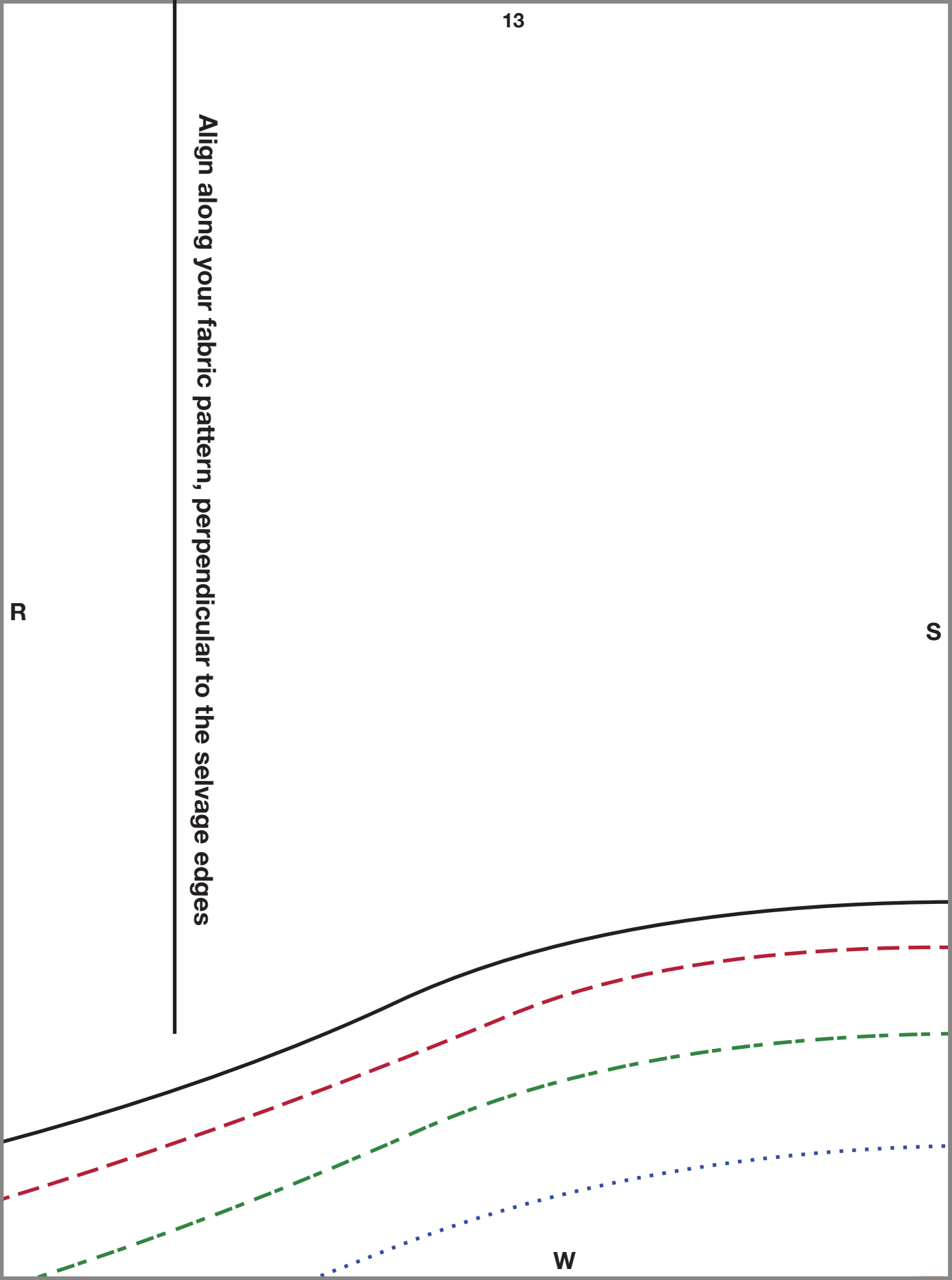
V

Align along your fabric pattern, perpendicular to the selvage edges

R

S

W



CARDIGAN

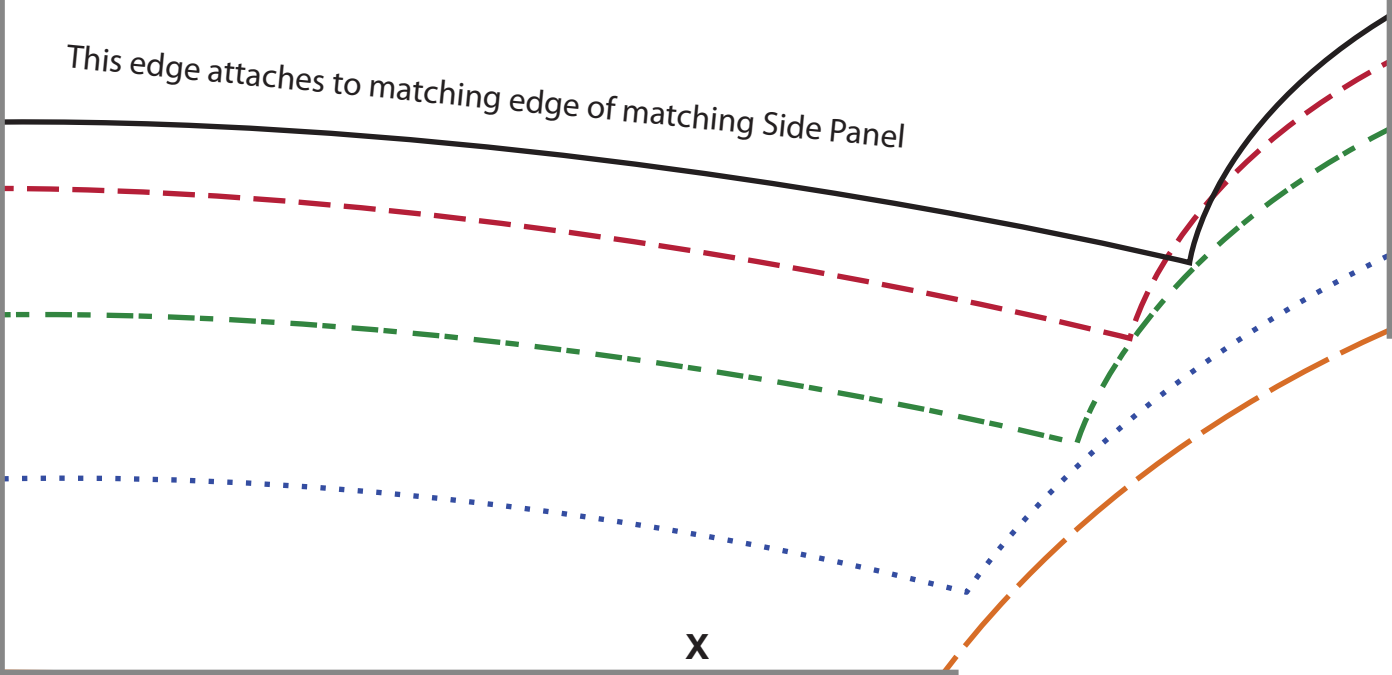
Cut 1

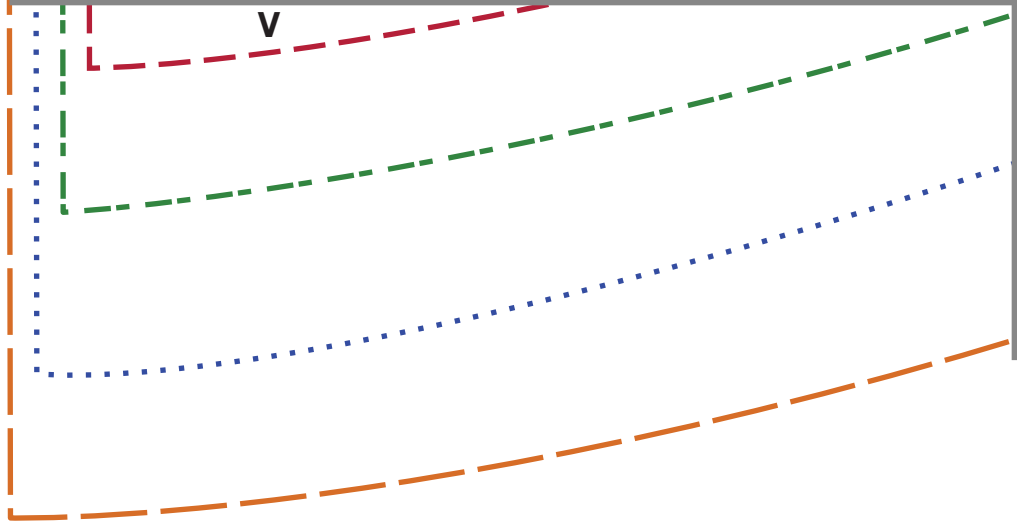
S

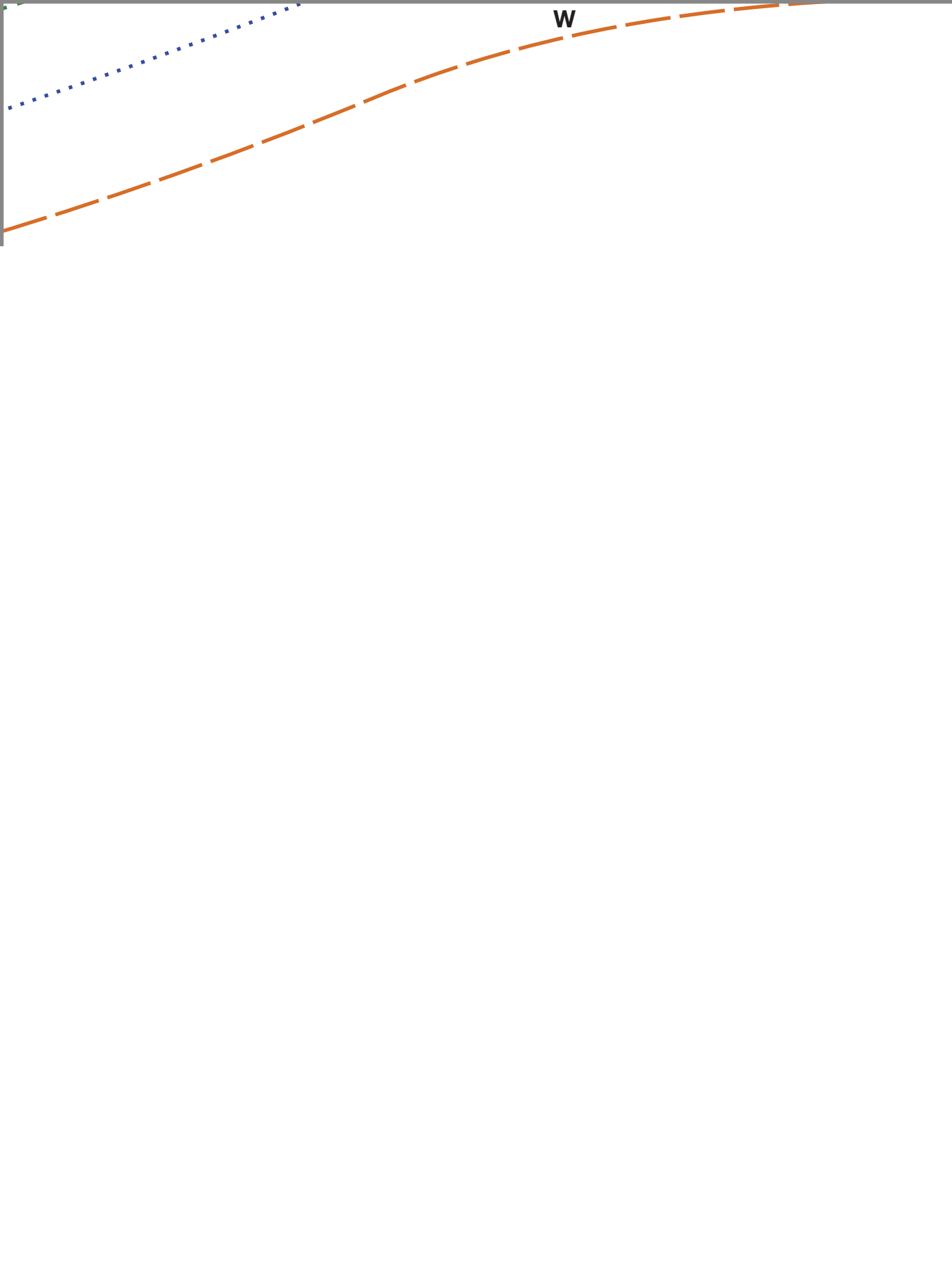
T

This edge attaches to matching edge of matching Side Panel

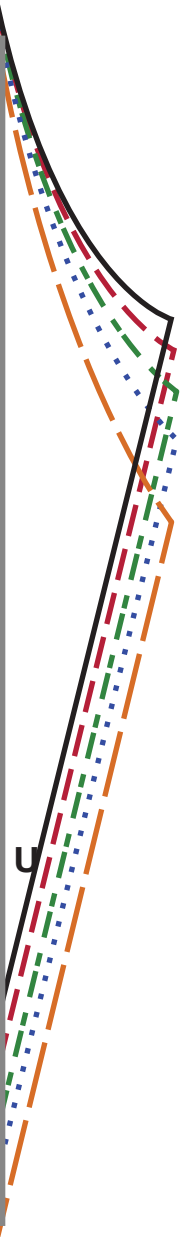
X







x



entire edge attaches to top curve of attached Front Panels



15

Sleeve

C

T

